

DZ-Series



DZ-MATRIX
(H11393)



DZ-EXPAND
(H11400)



DZ-PAD
(H11399)



DZ-CTL
(H11398)



DZ-CTL2OUT
(H11397)



DZ-MICDESK
(H11395)



DZ-BOX22
(H11396)

Firmware update

DZ-Series

Caution!

All products must be updated with the last firmware to work together.

All your devices must be connected to make update

You cannot use V3.0.0 Setting Software with V6.3II matrix firmware.

You cannot use V2.0.8 Setting Software with V7.1II matrix firmware.

		Original version	Updated version
DZ-MATRIX	MCU1	V6.3II	V7.1II
	DSP1	V2.3	V2.4
DZ-MICDESK	MCU1	V6.0	V7.1
DZ-BOX22	MCU1	V4.0	V5.0
DZ-CTL2OUT	MCU1	V4.2	V5.0
DZ-CTL	MCU1	V4.2	V5.1
DZ-EXPAND	MCU1	V6.0	V7.1
DZ-PAD	MCU1	V6.2	V6.3
PC Software	Firmware utility	V1.1.9	V1.2.6
	Setting Software	V2.0.8	V3.0.0
APP	IOS	V1.0.0	V2.0.0
	Android	V2.0.0	V2.0.0

Improvements :

DZ-MATRIX:

Link DSP on stereo inputs and outputs

Add “clear all” in matrix module

Save and load EQ preset on output DSP

Add group (4 inputs and 4 outputs)

Default preset

Ip setting (DHCP or Fixed IP)

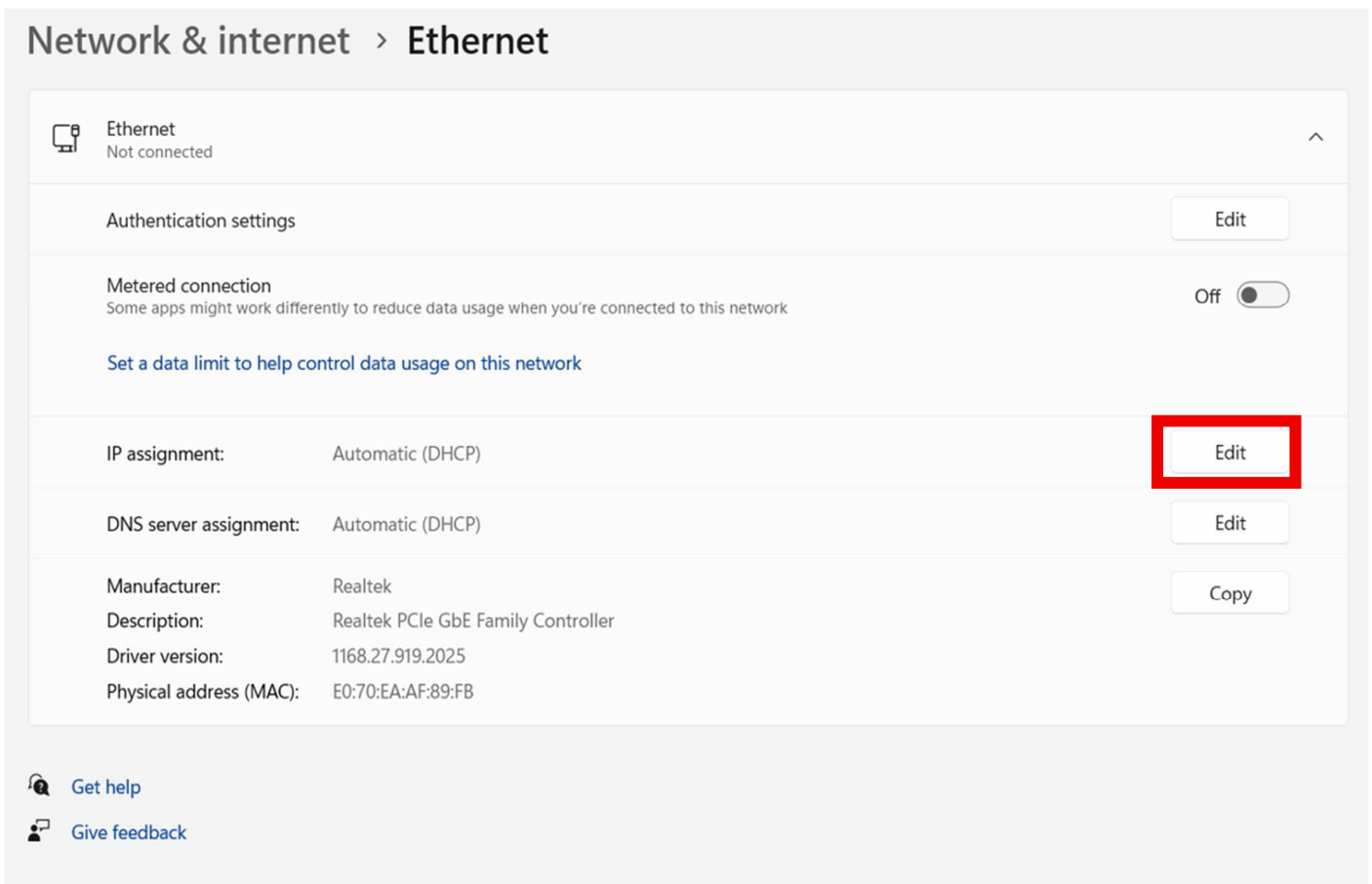
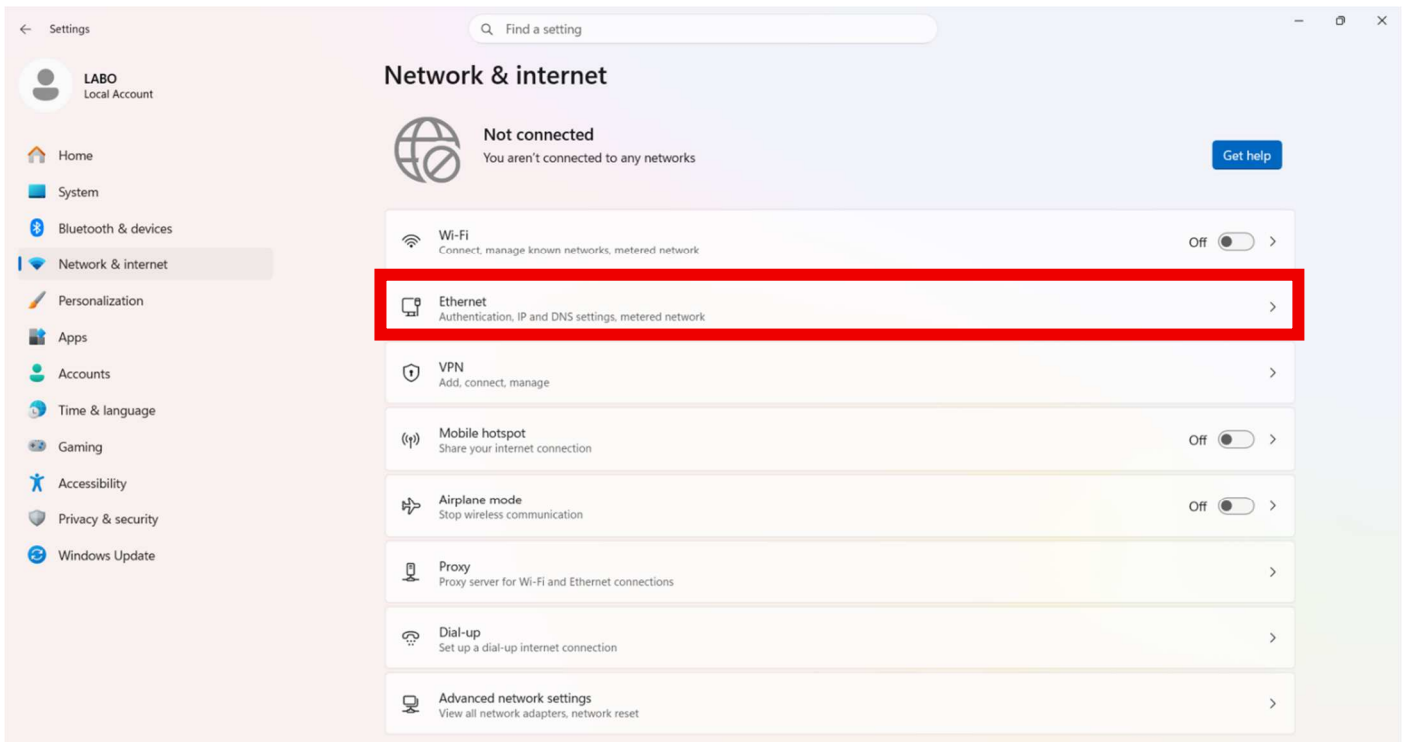
DZ-PAD:

Add “VOL-“and “VOL+” button on output page

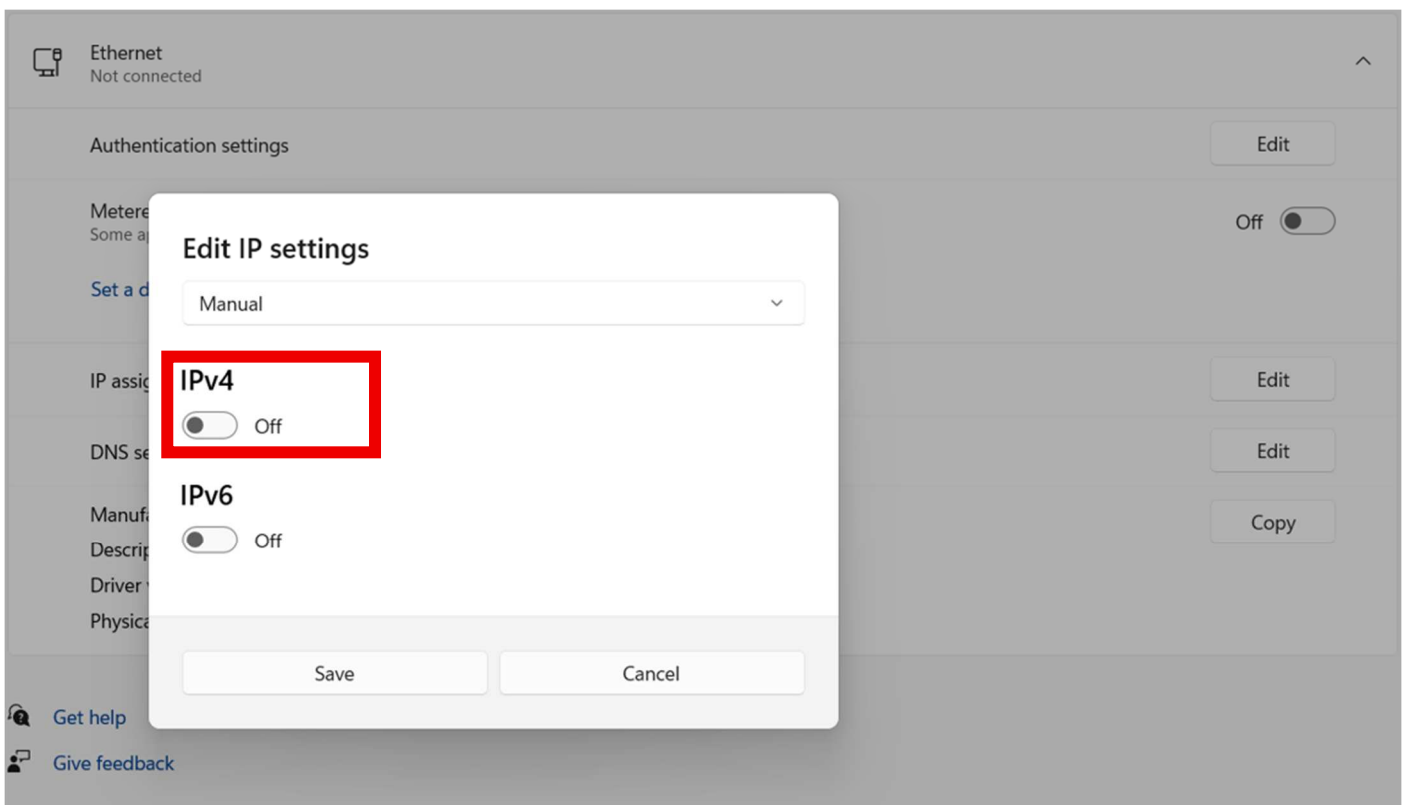
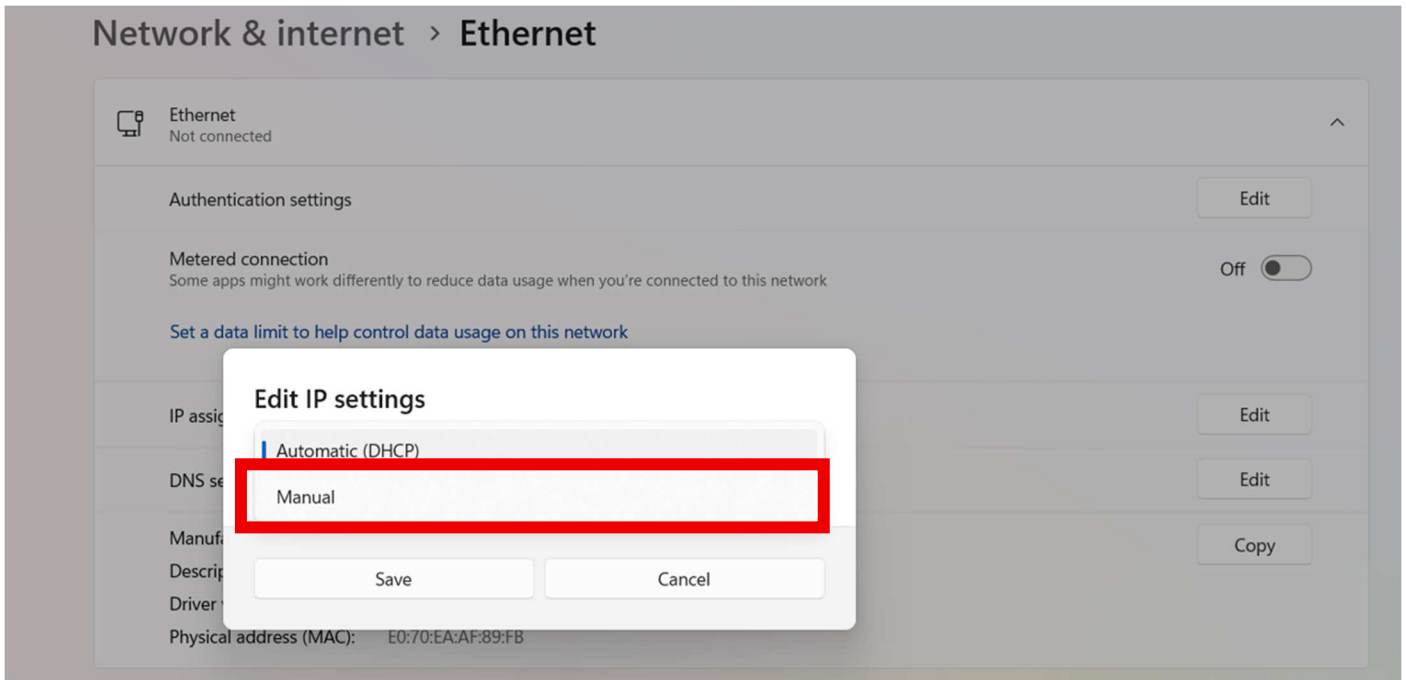
Add Group page.

Start of the update process

1: Computer Network setting



DZ-Series



Activate the IPv4 mode

DZ-Series

Edit IP settings

Manual

IPv4

On

IP address
192.168.1.10

Subnet mask
255.255.255.0

Gateway
192.18.1.10

Preferred DNS
8.8.8.8

DNS over HTTPS
Off

Alternate DNS

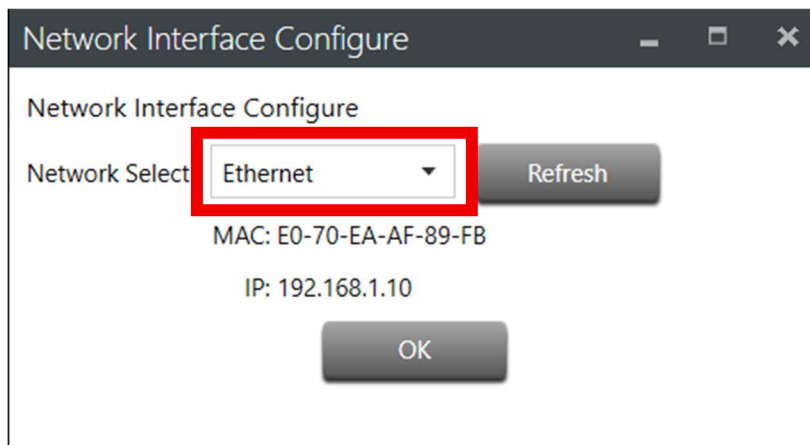
Save Cancel

Enter these values

2: DZ-MATRIX Firmware Utility

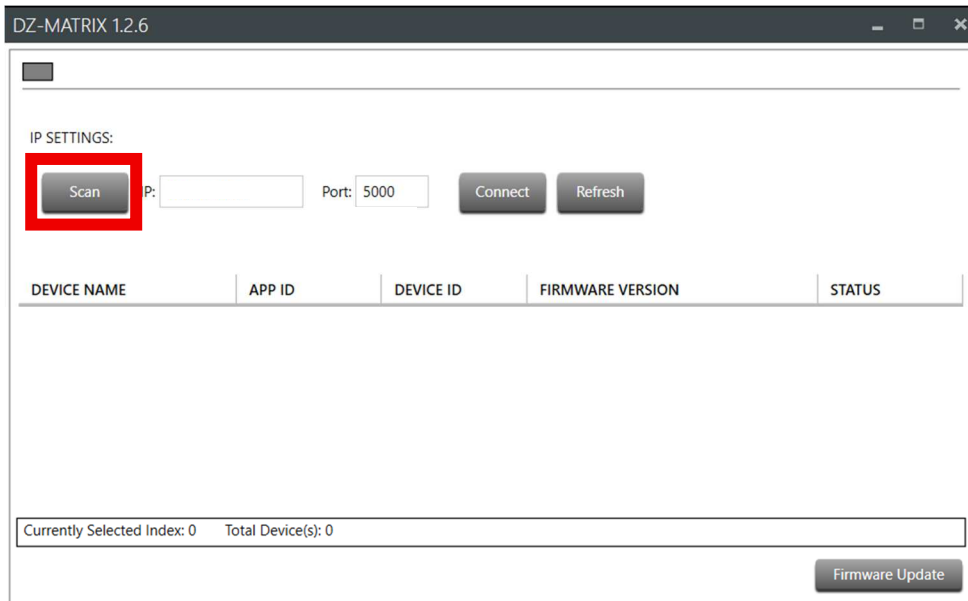
- a. Download DZ-MATRIX Firmware Utility_v1.2.6
- b. Unzip DZ-MATRIX Firmware Utility_v1.2.6
- c. Launche DZ-MATRIX Firmware Utility_v1.2.6.exe

Choose Ethernet and click on OK

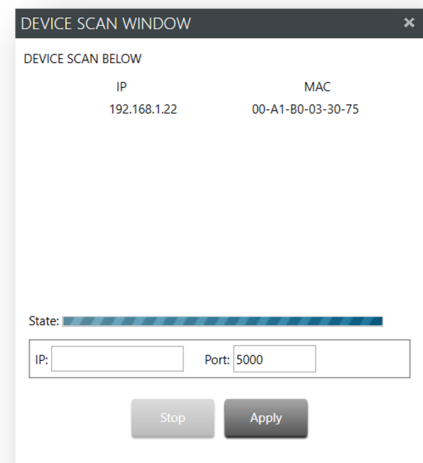
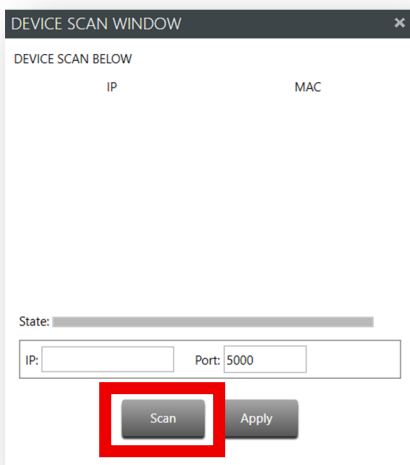


Firmware update

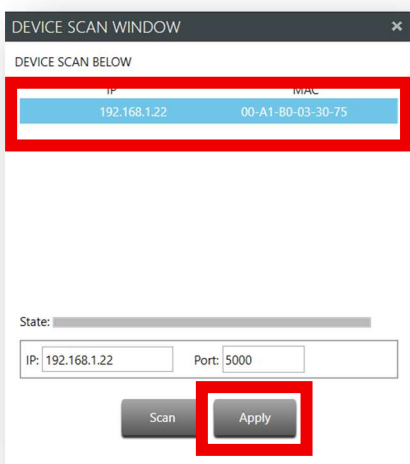
DZ-Series



Click on “Scan”



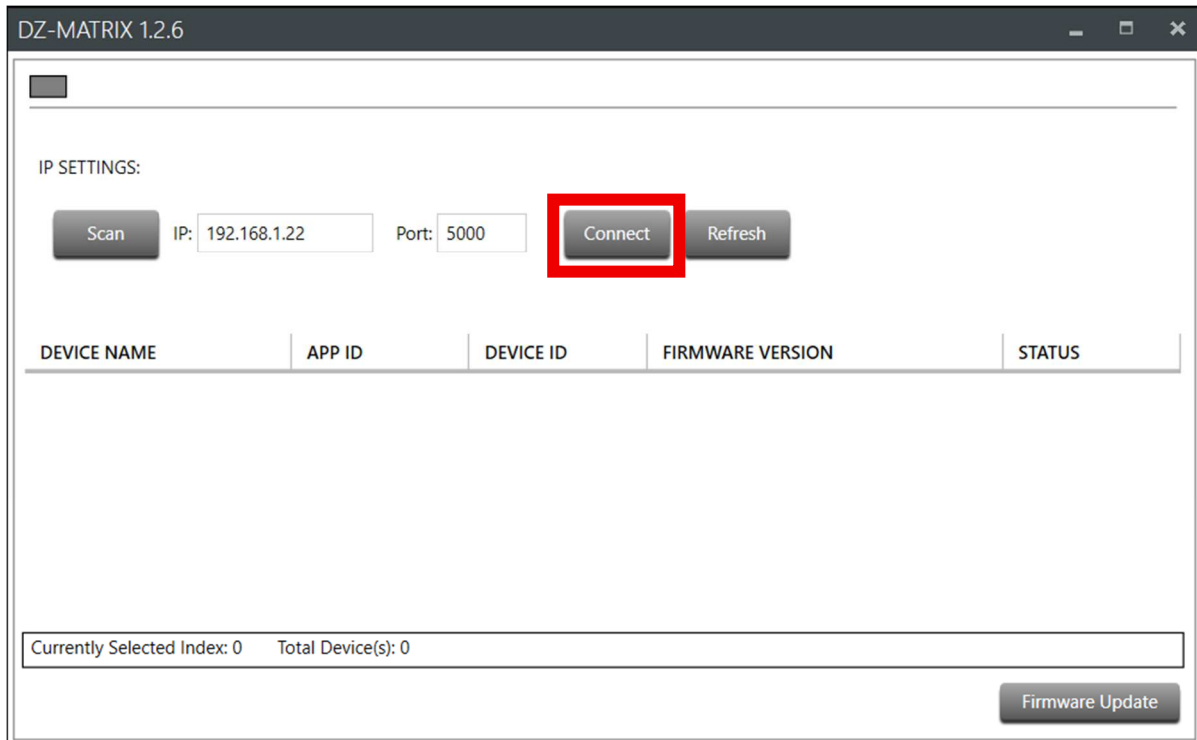
Click on “Scan”



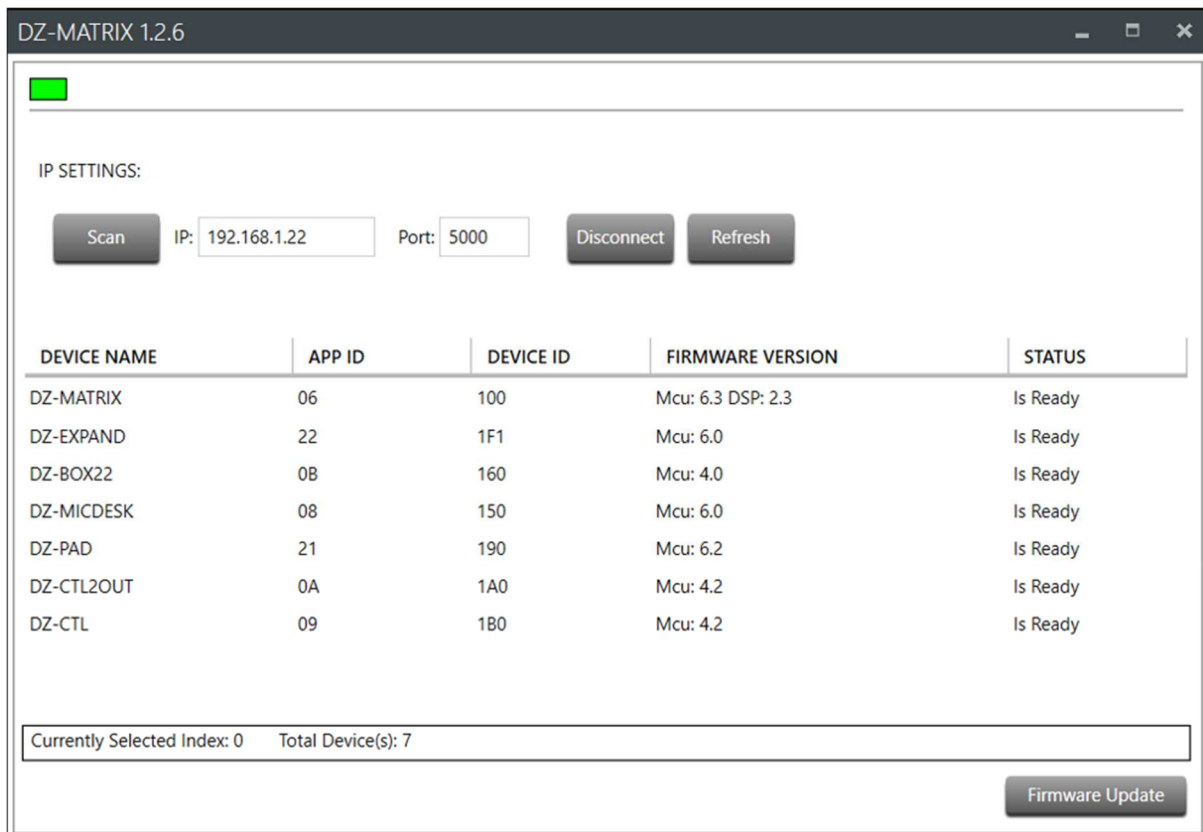
Choose the line and apply.

Firmware update

DZ-Series



Click on “Connect”

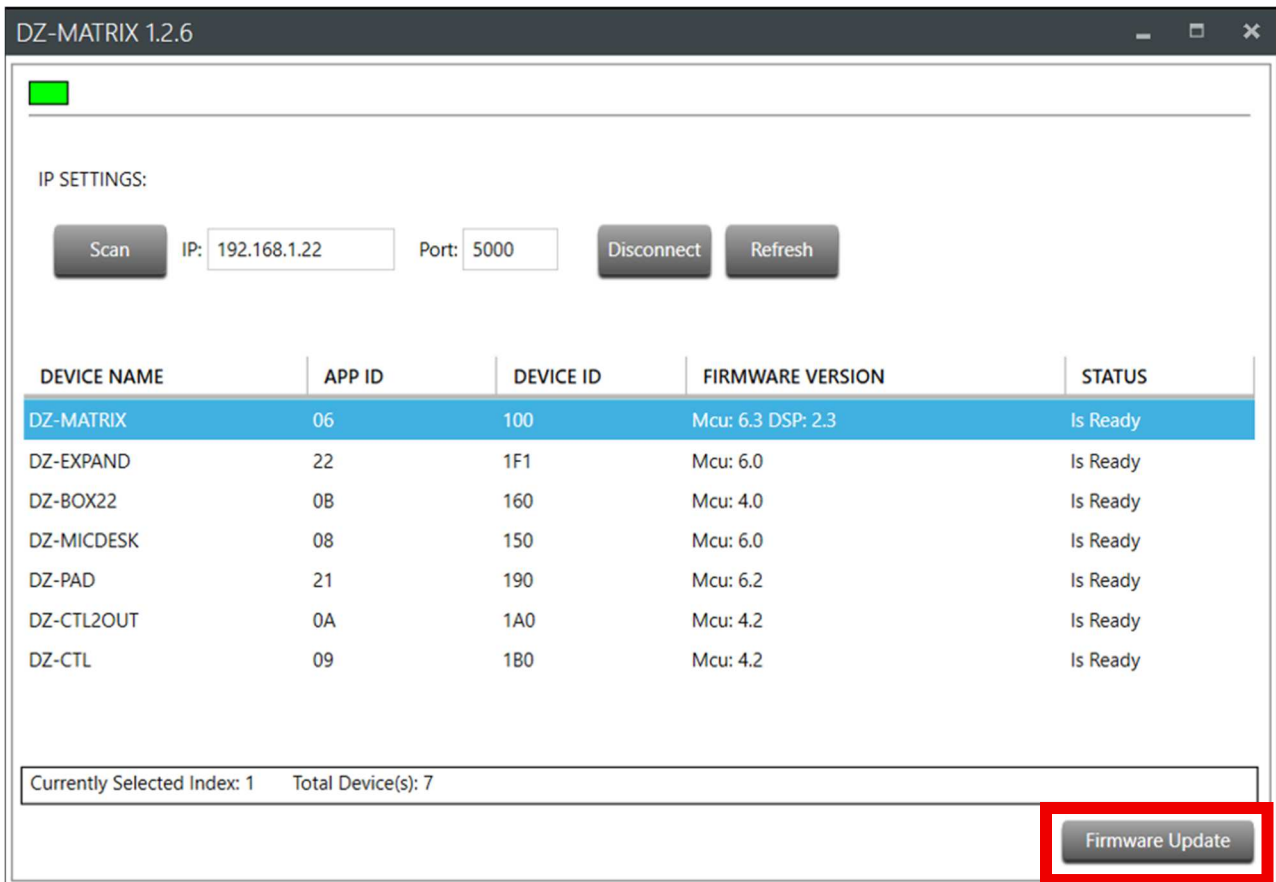


Now all plugged items are ready to update

Firmware update

DZ-Series

3: Update DZ-MATRIX



The screenshot shows the 'DZ-MATRIX 1.2.6' application window. At the top, there is a green status indicator. Below it, the 'IP SETTINGS:' section includes a 'Scan' button, an IP address field (192.168.1.22), a Port field (5000), a 'Disconnect' button, and a 'Refresh' button. A table lists several devices with columns for Device Name, App ID, Device ID, Firmware Version, and Status. The 'DZ-MATRIX' device is highlighted in blue. At the bottom right, a 'Firmware Update' button is highlighted with a red rectangle.

DEVICE NAME	APP ID	DEVICE ID	FIRMWARE VERSION	STATUS
DZ-MATRIX	06	100	Mcu: 6.3 DSP: 2.3	Is Ready
DZ-EXPAND	22	1F1	Mcu: 6.0	Is Ready
DZ-BOX22	0B	160	Mcu: 4.0	Is Ready
DZ-MICDESK	08	150	Mcu: 6.0	Is Ready
DZ-PAD	21	190	Mcu: 6.2	Is Ready
DZ-CTL2OUT	0A	1A0	Mcu: 4.2	Is Ready
DZ-CTL	09	1B0	Mcu: 4.2	Is Ready

Currently Selected Index: 1 Total Device(s): 7

Choose DZ-MATRIX line and click on “Firmware Update”

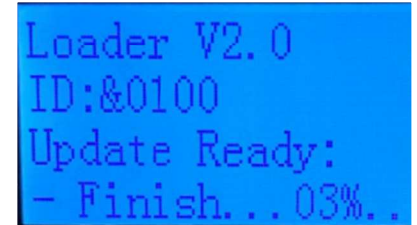
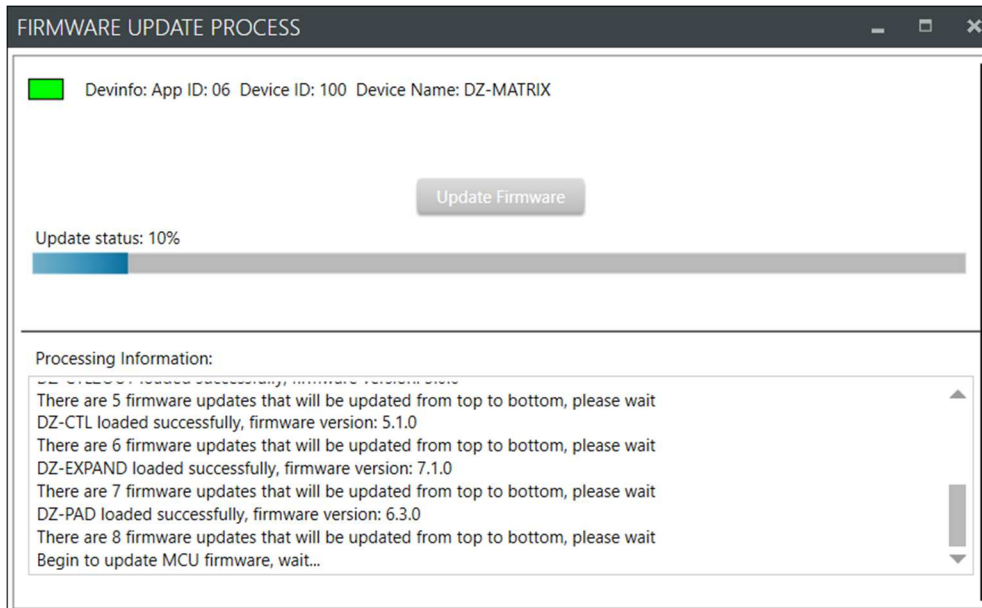


The screenshot shows the 'FIRMWARE UPDATE PROCESS' window. It displays the device information: 'Devinfo: App ID: 06 Device ID: 100 Device Name: DZ-MATRIX'. Below this, there is an 'Update Firmware' button. Underneath the button, there is an 'Update status:' section with a progress bar. At the bottom, there is a 'Processing Information:' section with a large empty text area.

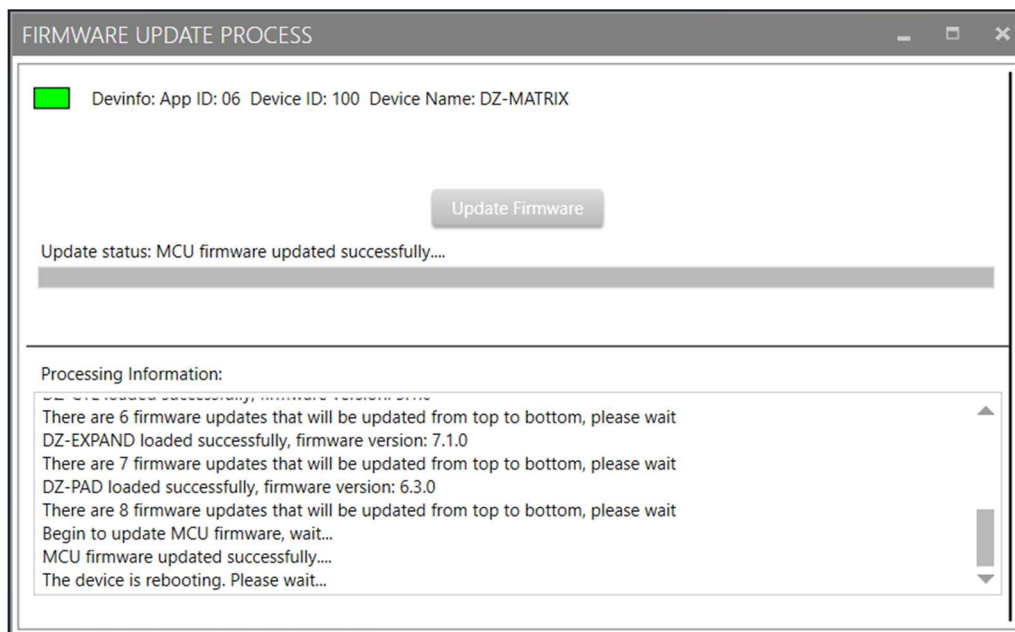
Click on “Update Firmware”

Firmware update

DZ-Series



After MCU firmware update, the matrix will restart.



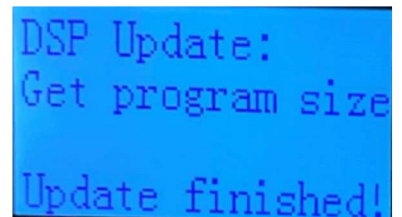
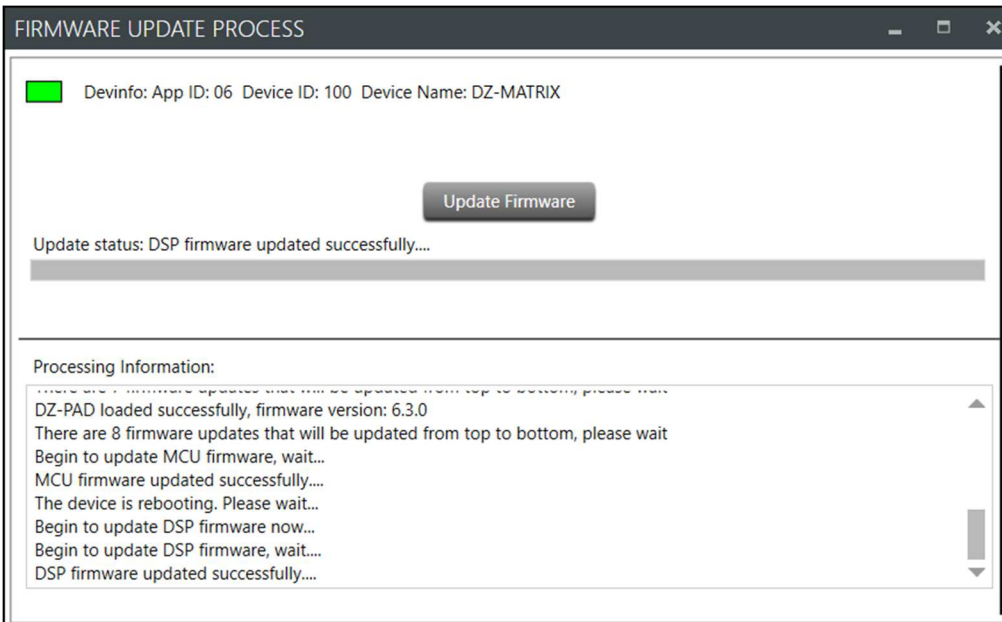
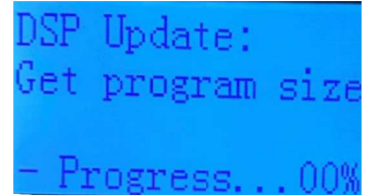
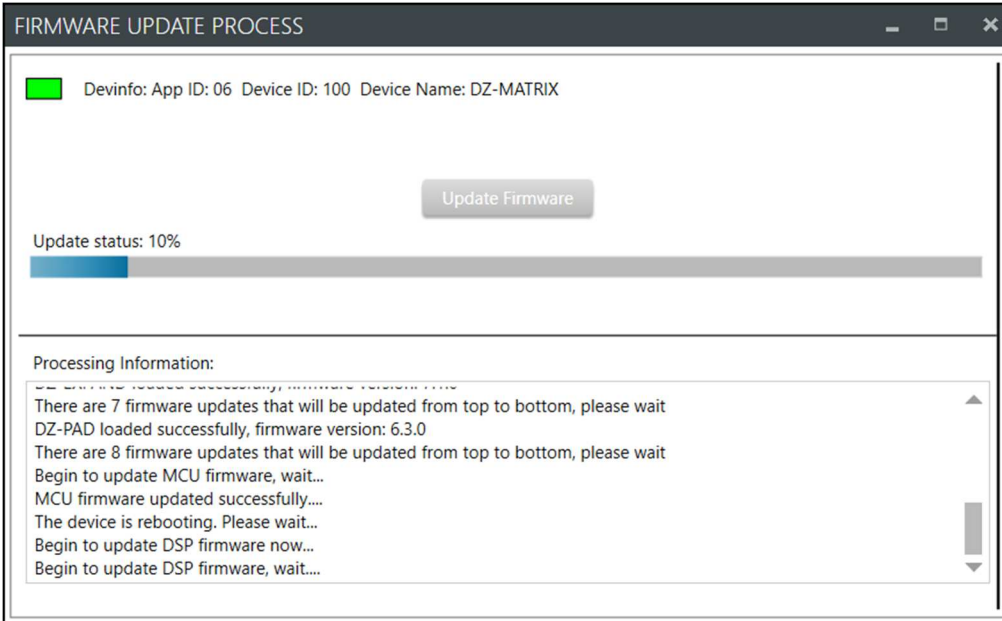
Wait

The DSP update will start automatically.

DO NOT UNPLUG THE DEVICE!

Firmware update

DZ-Series



Update successful



Click on OK

Firmware update

DZ-Series

DZ-MATRIX 1.2.6

IP SETTINGS:

Scan IP: 192.168.1.22 Port: 5000 Disconnect Refresh

DEVICE NAME	APP ID	DEVICE ID	FIRMWARE VERSION	STATUS
DZ-MATRIX	06	100	Mcu: 7.1 DSP: 2.4	Is Ready
DZ-EXPAND	22	1F1	Mcu: 6.0	Is Ready
DZ-BOX22	0B	160	Mcu: 4.0	Is Ready
DZ-MICDESK	08	150	Mcu: 6.0	Is Ready
DZ-PAD	21	190	Mcu: 6.2	Is Ready
DZ-CTL2OUT	0A	1A0	Mcu: 4.2	Is Ready
DZ-CTL	09	1B0	Mcu: 4.2	Is Ready

Currently Selected Index: 0 Total Device(s): 7

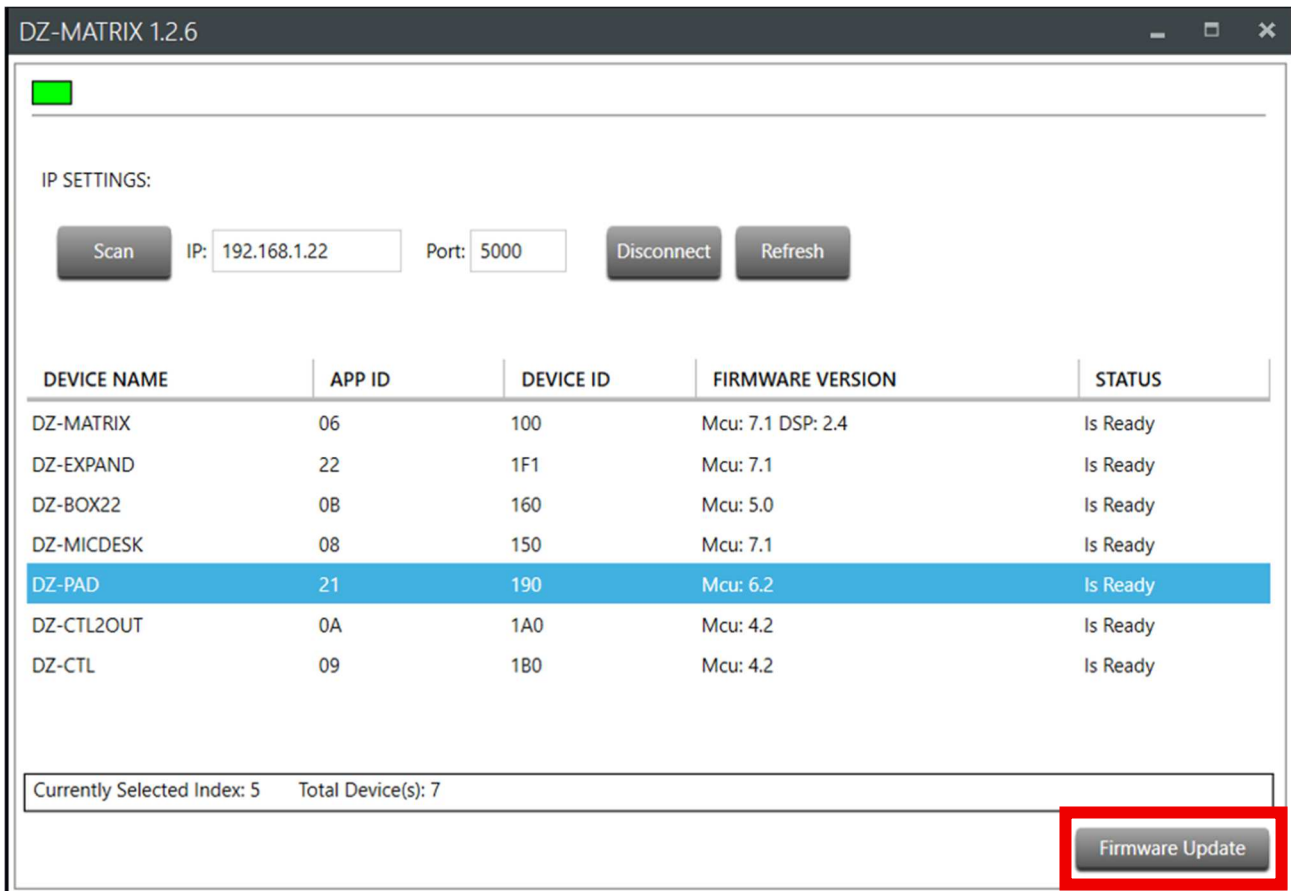
Firmware Update

You can check if the firmware version is OK

Now you can update another item.

DZ-Series

4: Update DZ-PAD



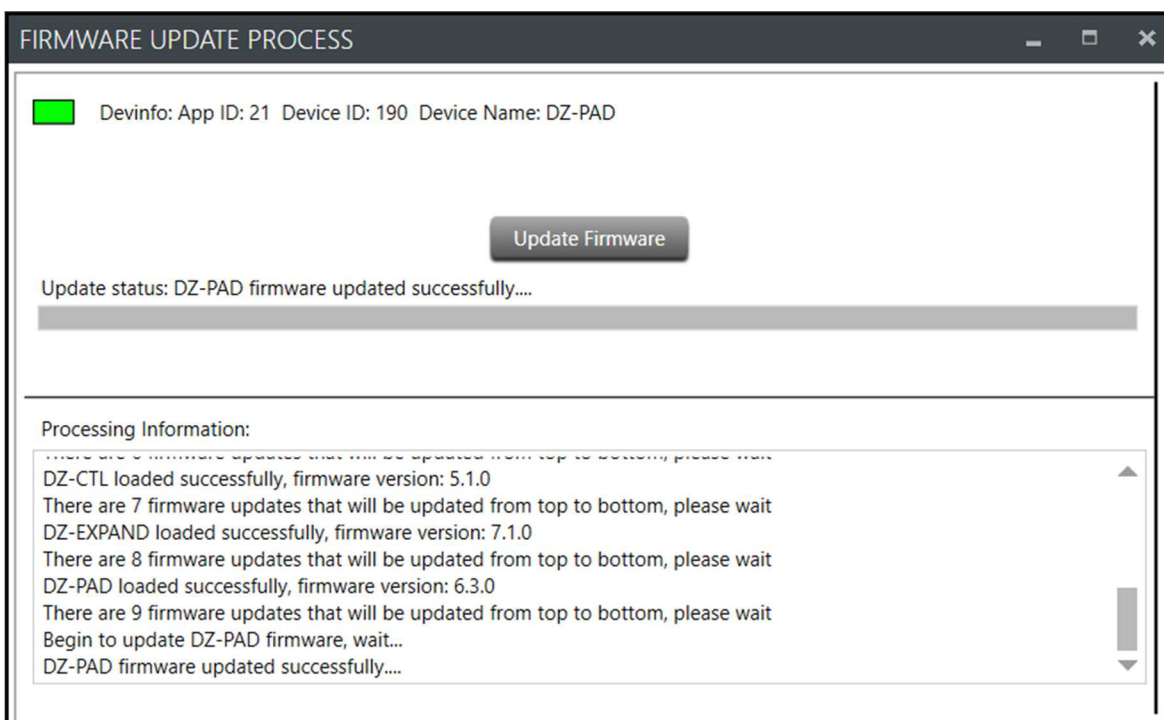
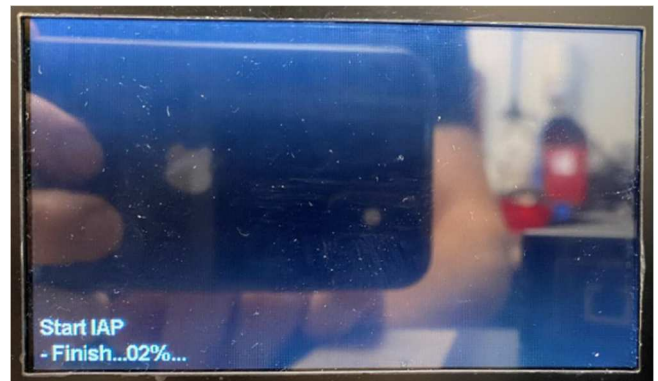
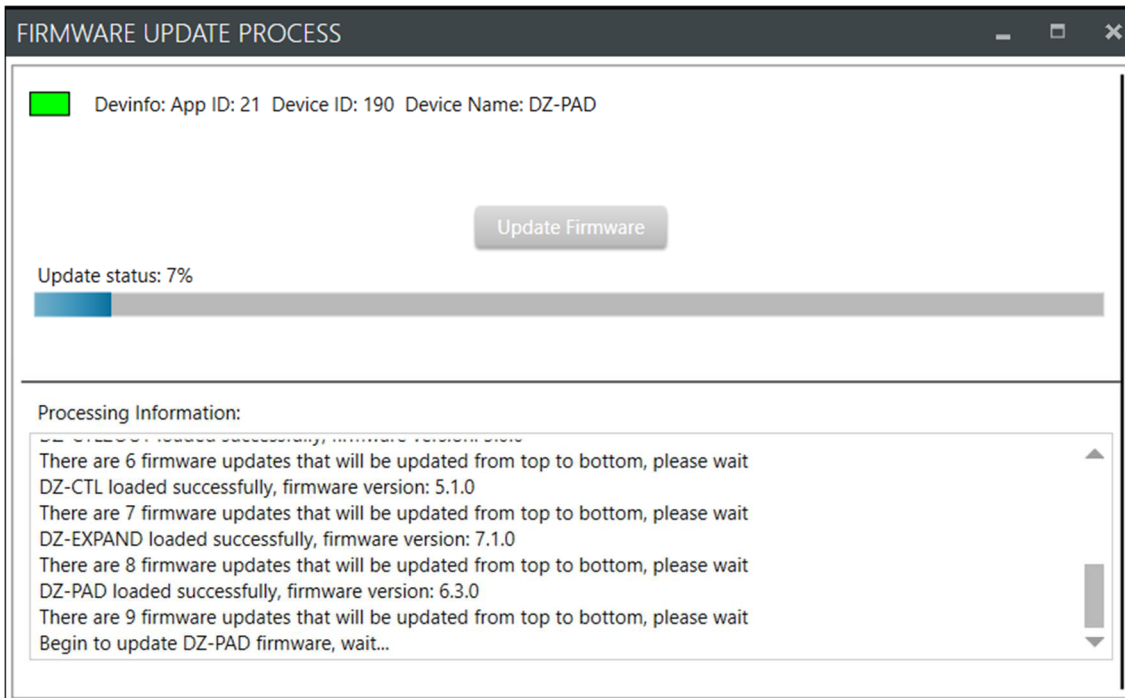
Choose DZ-PAD line and click on “Firmware Update”



Click on “Update Firmware”

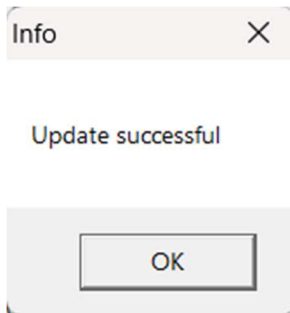
Firmware update

DZ-Series

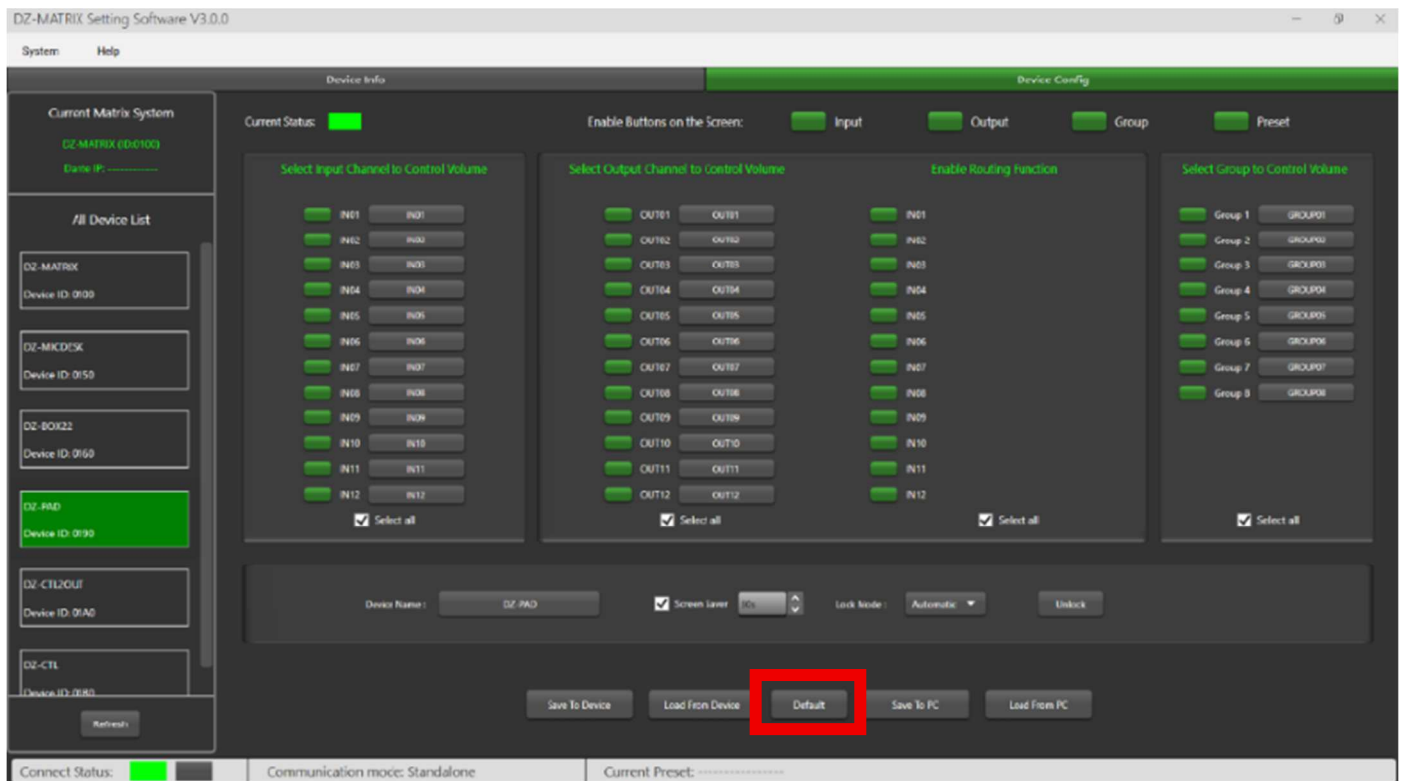


Firmware update

DZ-Series



When the update is successful, click on OK



After update, launch the DZ-MATRIX Setting Software V3.0.0 .

Click on “Default” on the DZ-PAD Device Config page.

For updating all other items, the process is the same as DZ-PAD.