

# WICASTamp

## USER GUIDE

H10995 - Version 1 - 09-2019

## 1 - Introduction

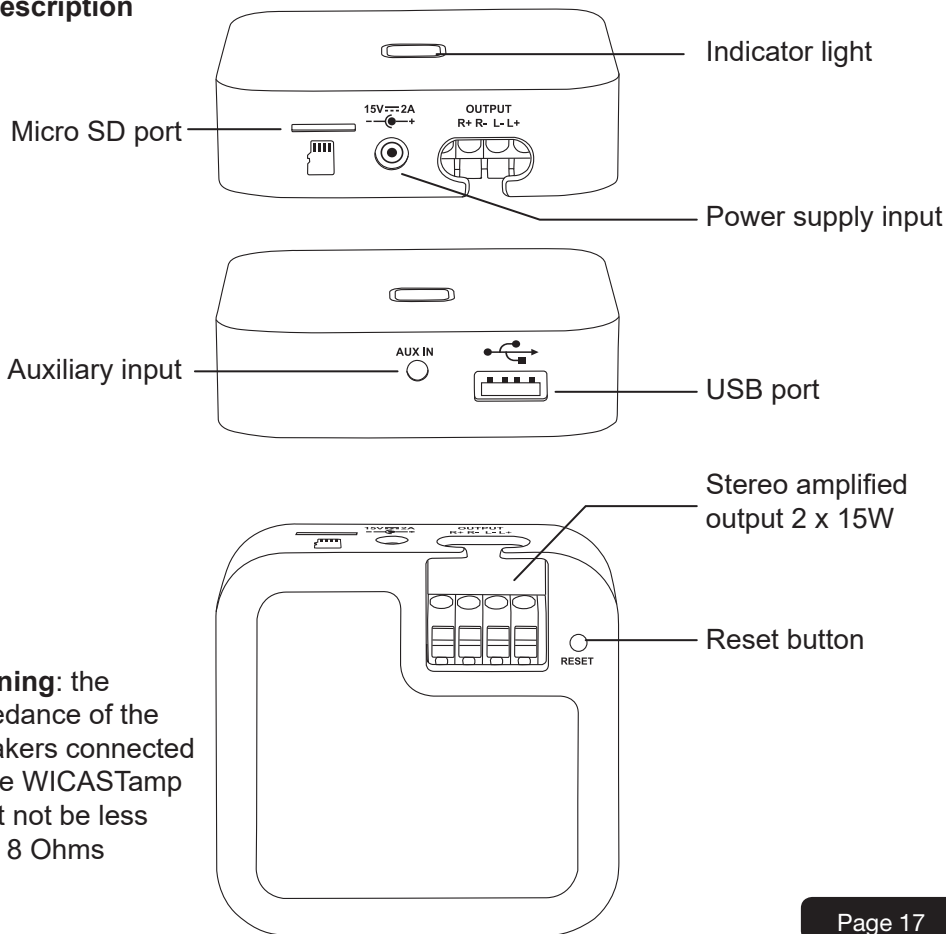
WICASTplay is an innovative wireless audio amplifier that can transform your current speakers into a multi-zone sound system by connecting to your home WI-FI network.

The MUZO Player app for iOS and Android offers the easiest and most user-friendly experience for streaming music and installing a multi-room audio system. WICASTplay also offers some of the most powerful playback options, allowing you to play synchronized music or multiple types of music from your mobile phone, online music services or home media storage with impressive sound quality in multiple zones.

## 2 - Package content

- The WICASTamp
- 1 x DC 15V adapter
- 1 x stereo 3.5 male Jack / 3.5 male Jack
- The user guide

### 3 - Description



**Warning:** the impedance of the speakers connected to the WICASTamp must not be less than 8 Ohms

#### 4 - Starting and behaviour of the indicator light

When the power is turned on, the LED flashes green. When the WICASTplay is ready this indicator stops flashing.

When using a USB media, this indicator lights up blue.

When using a micro SD card, this indicator lights up red.

#### 5 - Download the MUZO Player application

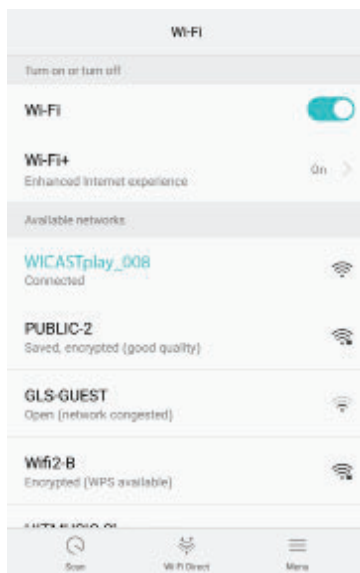
The MUZO player application is available on Google Play and Apple Store platforms. Below are the download links for each platform.



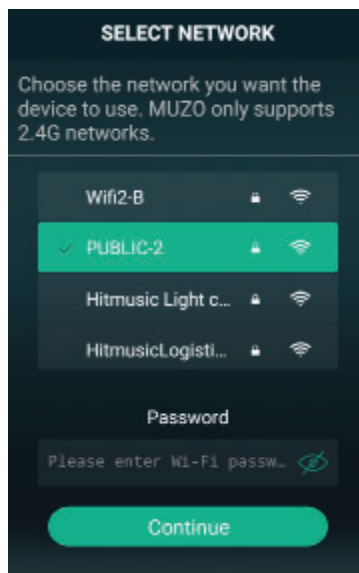
## 6 - Connexion

1. Connect your smartphone to your WICASTamp's WI-FI network.
2. Launch the MUZO Player application, the search starts.
3. Select your home network and enter the WI-FI password.

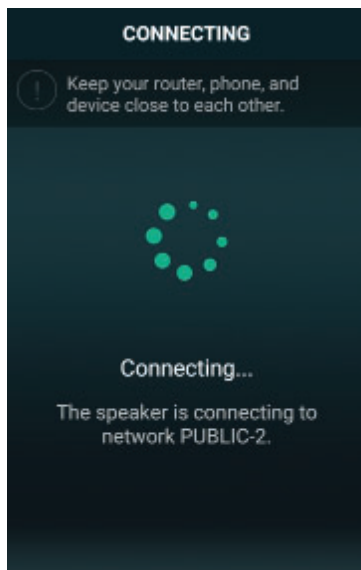
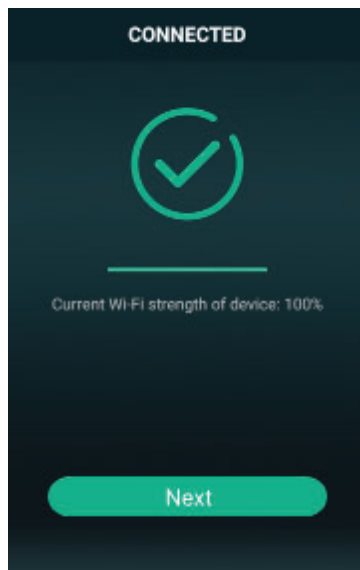
1



2 - 3

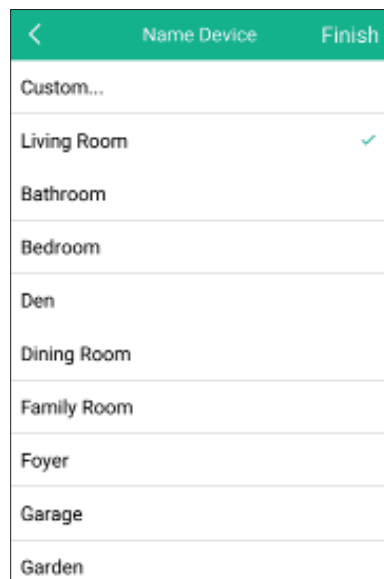
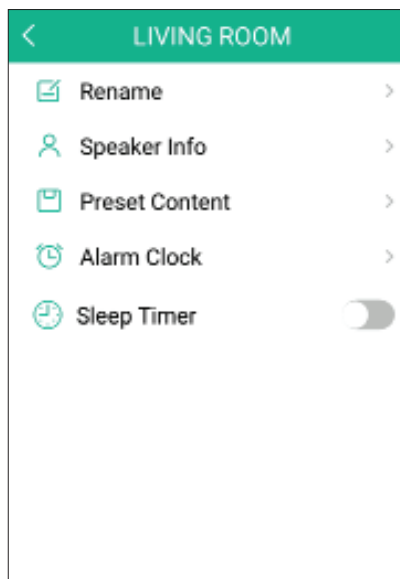


4. Once the device is connected, click on «Add device».
5. The following page gives you the status of the WI-FI connection.

**4****5**

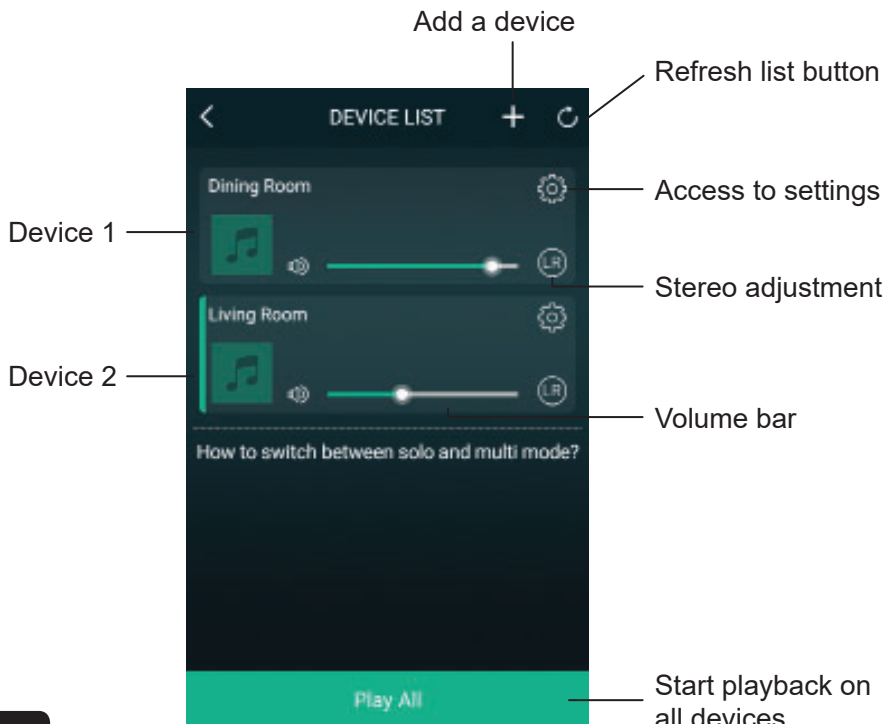
## 7 - Rename your WICASTamp

Once your WICASTamp is connected, you can rename it.  
This will allow you to identify it among other connected devices.



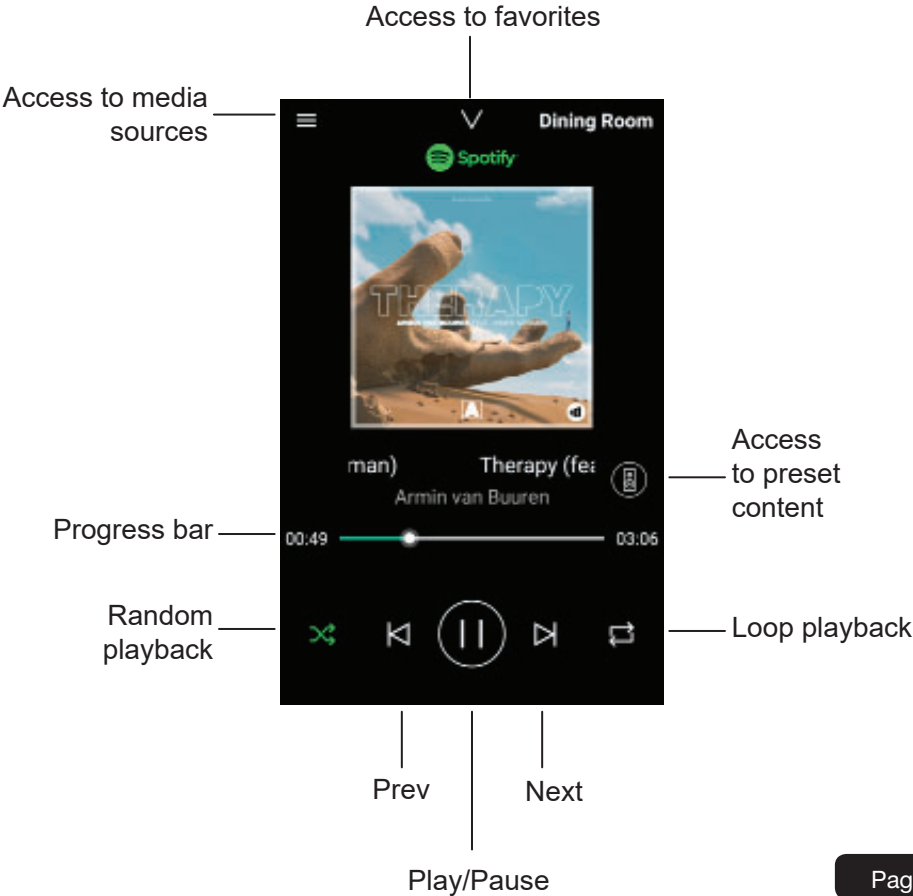
## 8 - WICASTamp control

This window allows you to manage the different WICASTamp connected to the application.





9 - Playback window



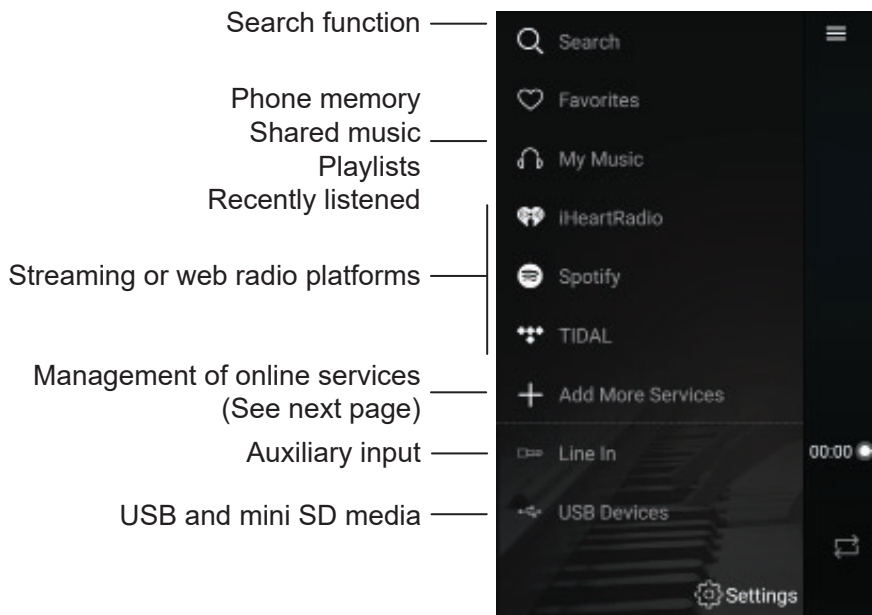
## 10 - Preset content

Through this window you can quickly access different services.

These pre-set contents are shortcuts that prevent you from setting up media sources each time you use them.



## 11 - Media sources

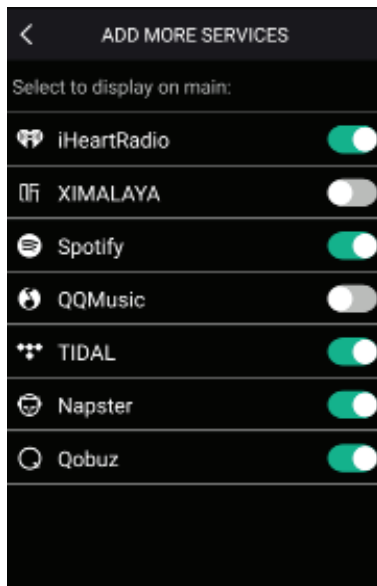


Note: the list of streaming or webradios platforms can change according to the updates of the application.

Most streaming platforms or webradios require registration to benefit from their services.

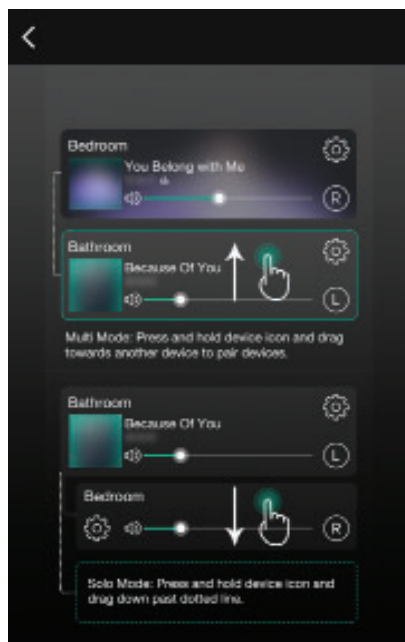
## 12 - Service Management

In this window you can enable or disable online broadcasting services so that only those you have subscribed to appear in your list.



## 12 - Multi-zone management

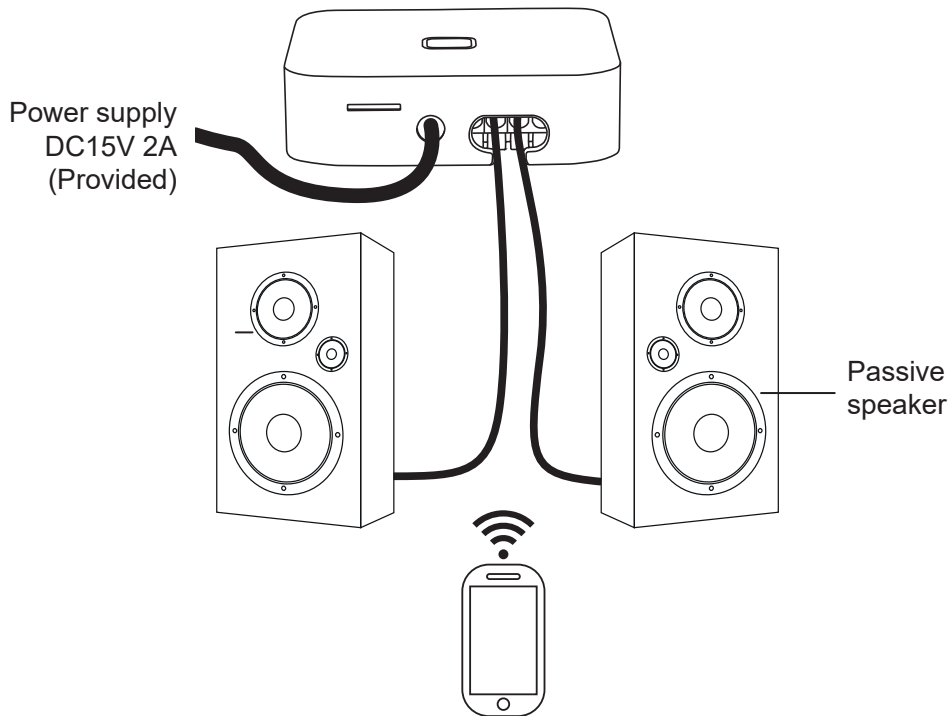
If you have several WICASTamp spread over several zones, you can choose either to play different music in each zone or to play the same music over several zones simultaneously.



To group two devices, slide one device on top of the other upwards.

To ungroup two devices, slide one of the two devices down.

## 13 - Wiring procedure



Because AUDIOPHONY® takes the utmost care in its products to make sure you only get the best possible quality, our products are subjects to modifications without prior notice. That is why technical specifications and the products physical configuration might differ from the illustrations.

Make sure you get the latest news and updates about the AUDIOPHONY® products on [www.audiophony.com](http://www.audiophony.com)

AUDIOPHONY® is a trademark of HITMUSIC S.A.S - Parc d'Activités Cahors Sud – En Teste - 46230 FONTANES - FRANCE